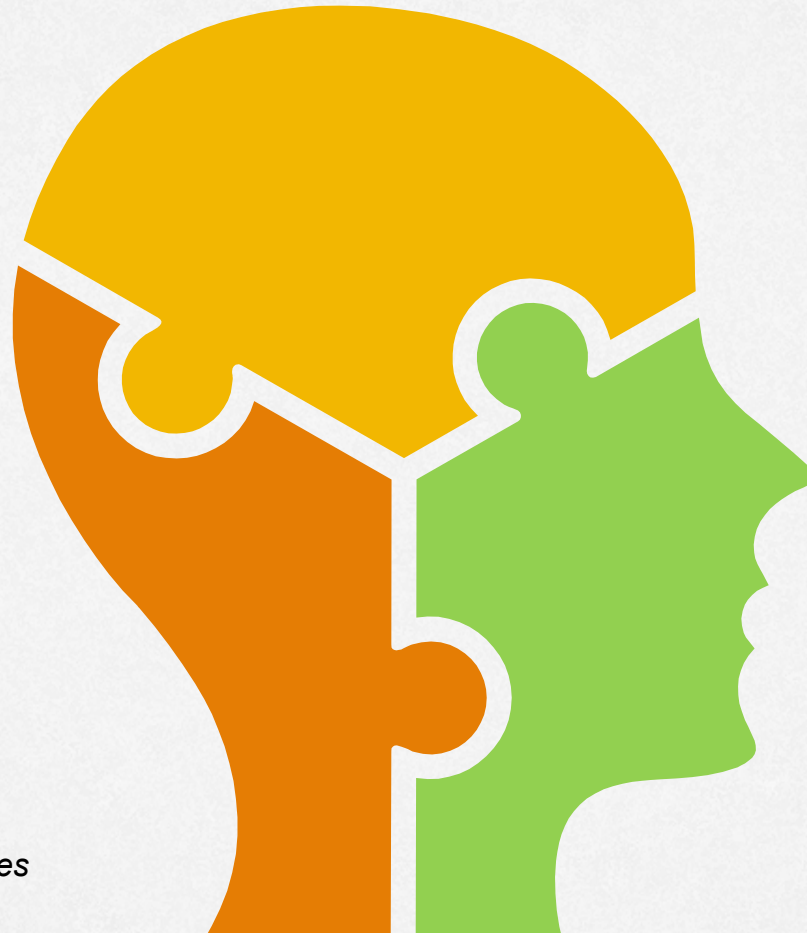


# Seminaries: Mental Health



*The report has been prepared for:  
Donna Miller, PsychD  
Associate for Mental Health Ministries  
Compassion, Peace and Justice*

Susan Barnett, PhD  
Jashalund Royston, MA  
Research Services

January 2020



## ■ Process

Research Services works with clients to determine the purpose of the work, who should be surveyed, and timeline.

- Preliminary meetings were held with Mental Health Initiative (MHI) staff leadership to discuss the work
- Five surveys were designed
- Research Services supplied mid council, church leaders, and members contacts
- MHI provided the seminary contacts
- Surveys were approved by MHI leadership
- Surveys were sent to ministers in September
- Surveys were sent to mid council leaders, church leaders, seminaries, and church members in October
- Links to all surveys were on the MHI website
- The survey process included an invitation to participate, two reminders, and an immediate thank you upon completion of the survey
- Surveys closed on November 1 for mid council leaders, church leaders, church members, and seminaries
- The ministers survey closed on November 15

*\* 12 participants responded to the survey and only 5 completed it in its entirety. Given the small number of responses, the following slides are for information purposes, and the findings cannot be generalized to the wider population.*

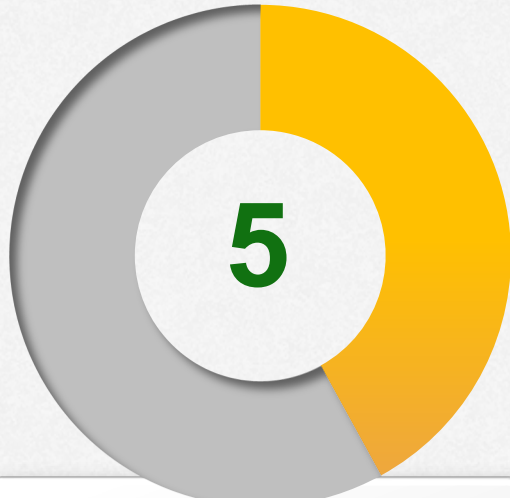


# Does the seminary's curriculum include material about mental health issues?

N=12



We cover mental issues as one of the topics in class



We do not cover mental health issues



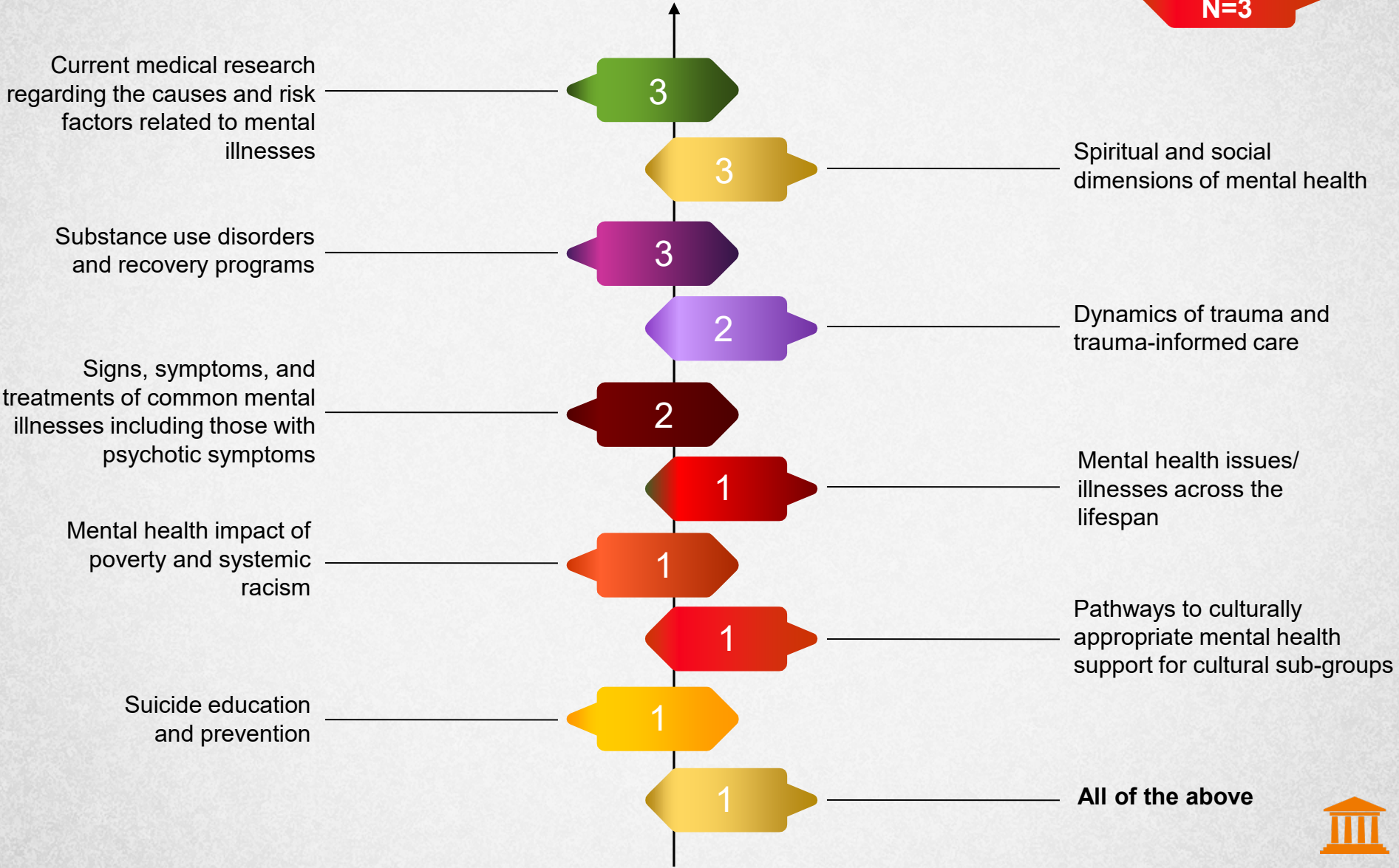
We have classes devoted entirely to mental health issues



# General knowledge of mental health and mental illness

*The current curriculum includes the following content areas that focus on:*

**Count  
N=3**



General knowledge of *mental health topics*  
as a part of your institutions educational program are...

Count  
N=3



Required for all M.Div. students  
n=2

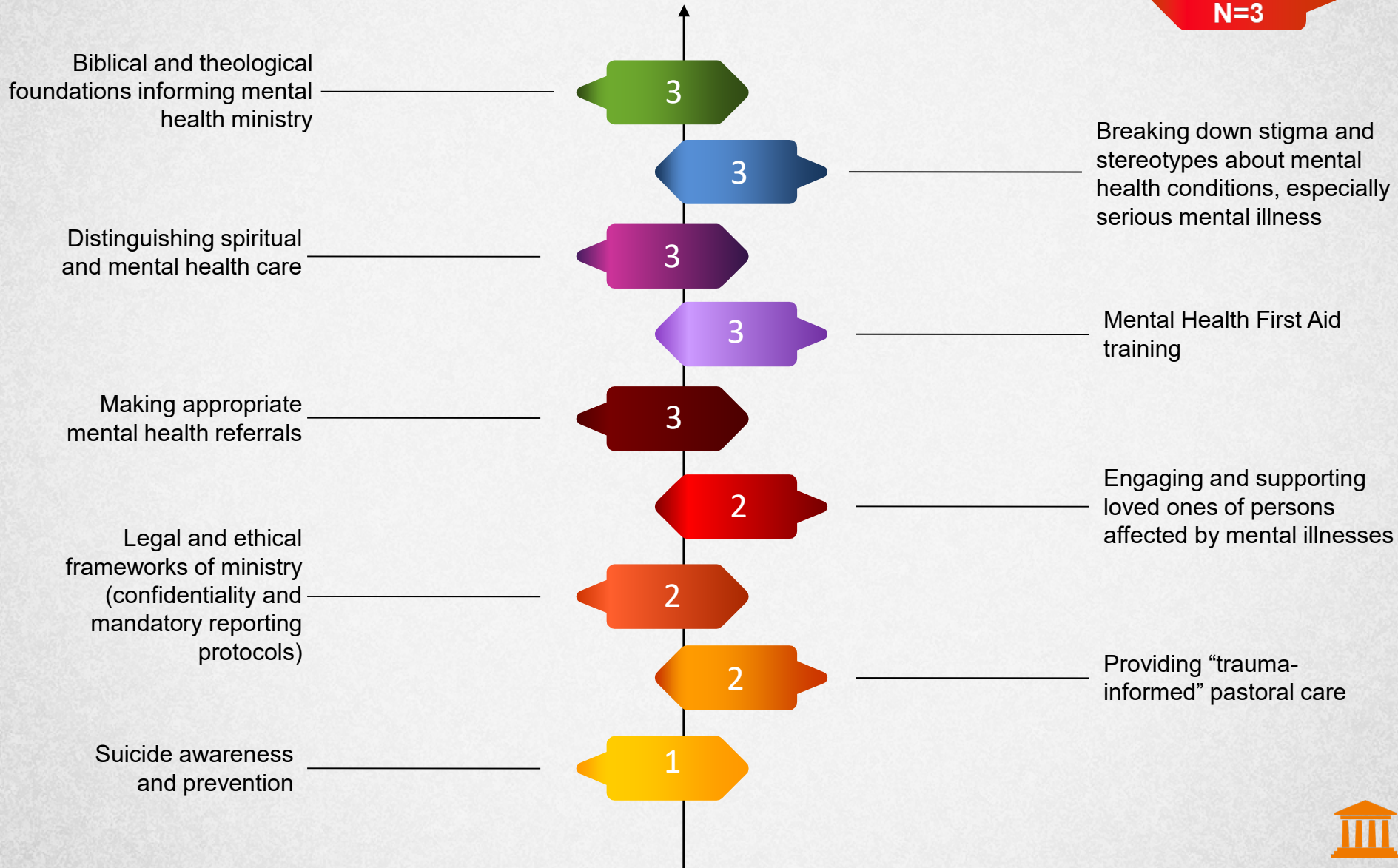
Required for students in some  
degree tracks n=1



# Models and skills for advancing mental health ministry in congregations

*The current curriculum for skill development includes the following content areas:*

Count  
N=3



Teaching about *mental health ministry*,  
as a part of your institutions educational program are...

Count  
N=3



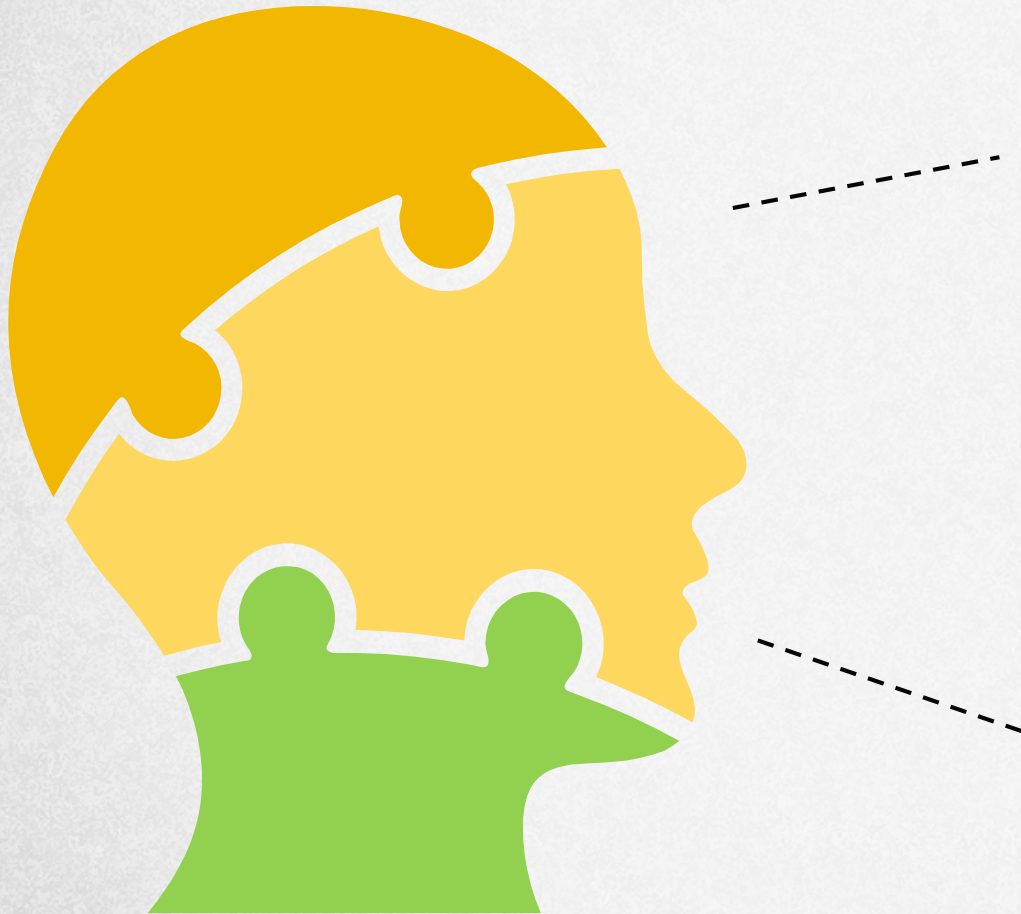
Required for all M.Div. students  
n=2

Required for students in some degree  
tracks n=1



# Students' preparation for ministry current curriculum focuses on...

Count  
N=5



Self-care, boundary-setting,  
and self-awareness  
n=3

Participation in personal  
counseling/ therapy  
n=2





General topics related to *mental health aspects of students' preparation* for ministry are a part of your institution's educational program are...

Count  
N=3



Required for all M.Div. students  
n=2

Required for students in some degree  
tracks n=1



# Who is involved in the teaching of mental health-related content?

Count  
N=3

Full-time professors of pastoral care with theological and mental health backgrounds

3

Visiting professors

2

Mental health professionals

2

Guest lecturers

1

Practicum and placement supervisors

1

Part-time faculty with a mental health specialty

1



All M.Div. students training for ministry are *expected to undertake personal counseling or therapy* as part of their preparations.

Count  
N=5



Strongly agree  
n=3

Agree  
n=1

Neutral  
n=1



All students training for ministry would be expected to participate in a *peer support/personal growth group*

Count  
N=5



Strongly agree  
n=3

Agree  
n=2



*All ministers serving congregations* should be encouraged to enlist a trained consultant with whom they regularly meet to confidentially discuss issues arising in congregational ministry.

Count  
N=5



Strongly agree  
n=1

Agree  
n=4



*All ordained ministers* should be encouraged to enlist a trained consultant outside of their congregation with whom they are regularly meet to confidentially discuss issues arising in congregational ministry.

Count  
N=5



Strongly agree  
n=1

Agree  
n=3

Neutral  
n=1



This institution provides free or low-cost confidential counseling/ therapy to...

Count  
N=5

**None of its Students**

1

**Some Students**

2

**All Students**

2



# Top five topics in order of importance that respondents would like to see strengthened at their institution\*

Count  
N=3

1

Self-care, boundary setting, and self-awareness

2

Preaching and teaching about mental health and mental illness

3

Personal counseling/therapy requirement as a component of training for ministry

4

Mental Health First Aid skills for pastors

5

Making appropriate mental health referrals

\*Responses for all options are found in a separate Excel file.





# Respondents' awareness of mental health resources available to congregations, mid councils, and seminaries

Count  
N=5



Only 1 is aware that \$250,000 has been set aside to expand or initiate mental health ministries.

Only 1 is aware of the Mental Health Ministry website

