

# Person in the Pew: Mental Health



*The report has been prepared for:*

Donna Miller, PsychD  
Associate for Mental Health Ministries  
Compassion, Peace and Justice

Susan Barnett, PhD  
Jashalund Royston, MA  
Research Services

January 2020




## ■ Process

Research Services works with clients to determine the purpose of the work, who should be surveyed, and timeline.

- Preliminary meetings were held with Mental Health Initiative (MHI) staff leadership to discuss the work
- Five surveys were designed
- Research Services supplied mid council, church leaders, and members contacts
- MHI provided the seminary contacts
- Surveys were approved by MHI leadership
- Surveys were sent to ministers in September
- Surveys were sent to mid council leaders, church leaders, seminaries, and church members in October
- Links to all surveys were on the MHI website
- The survey process included an invitation to participate, two reminders, and an immediate thank you upon completion of the survey
- Surveys closed on November 1 for mid council leaders, church leaders, church members, and seminaries
- The ministers survey closed on November 15

# Key Findings

- 
- Half of members (54%) do not identify any listed mental health information, services, or resources as being available at their church. **Almost all** members identify services available in the town or community in which their church is located.
  - Nearly half (49%) of members would say that their church is “*not*” or “*probably not*” equipped to welcome individuals with significant mental health issues into the daily life of the church and only 4% say that their church is “*very well equipped*” to respond to its ministers who are facing mental health challenges.
  - Almost all members (97%) know or have known someone with mental illness or mental health concerns. Members also have an abundant understanding of the warning signs of mental illness, and can identify myths about mental illness as false.
  - Most members (90%) are not aware of funds, information or resources available to churches for mental health ministries. Half of members (43%) are not aware of any information or directories maintained by their church. Almost half of members are not aware of their church’s minister(s) or staff expressing the need for additional mental health training to aid the church or community.

Think about the various activities in this church over the last 12 to 18 months.  
This church...

N=905

60%

Provides space to a community support group such as AA or Compassionate Friends

43%

Provides support or prayer groups for individuals or loved ones facing mental health concerns

43%

Engages in ministry with individuals who are both homeless and who have a mental illness

40%

Provides support following a traumatic event (natural disaster, mass shooting, hate crime)

31%

Advocates for and with people with mental illness and their families

30%

Had a sermon or worship service that either focused on or included issues of mental health/mental illness

27%

Provides opportunities to learn about mental health/mental illness

24%

Advocates on issues related to mental health in the community

The following statements focus on the interest, ability, and engagement in current mental health ministries of congregations in this church.

N=895

My church is:

	Strongly Disagree	Moderately Disagree	Neither Disagree nor Agree	Moderately Agree	Strongly Agree
Interested in learning more about mental health	5%	7%	<b>38%</b>	<b>38%</b>	12%
Equipped to engage in a mental health ministry	15%	<b>28%</b>	<b>28%</b>	24%	5%
Engaged in some form of a mental health ministry	17%	21%	25%	<b>29%</b>	8%

**54%**  
of members report  
“None of these”  
services being  
available at their  
church

**18%** Members trained in Mental Health First Aid

**16%** A counseling ministry

**15%** Members who are trained to offer companionship to people with serious mental illness  
Information about mental health and mental illness displayed in prominent locations around their church

**10%** Includes those who are impacted by mental health conditions in the planning of mental health activities

**5%** An observance for Mental Health Month in May  
An independent counseling service located on our campus

**2%** An observance for Serious Mental Health Week in October

# Rank the barriers to mental health ministries in your church

N=701

**# 1** *Not knowing how to respond to an individual who is showing signs of a mental health condition*

*followed by ...*

**# 2** Lack of knowledge about mental health issues

**# 3** Lack of time

**# 4** Myths, misunderstandings, or stereotypes about mental illness

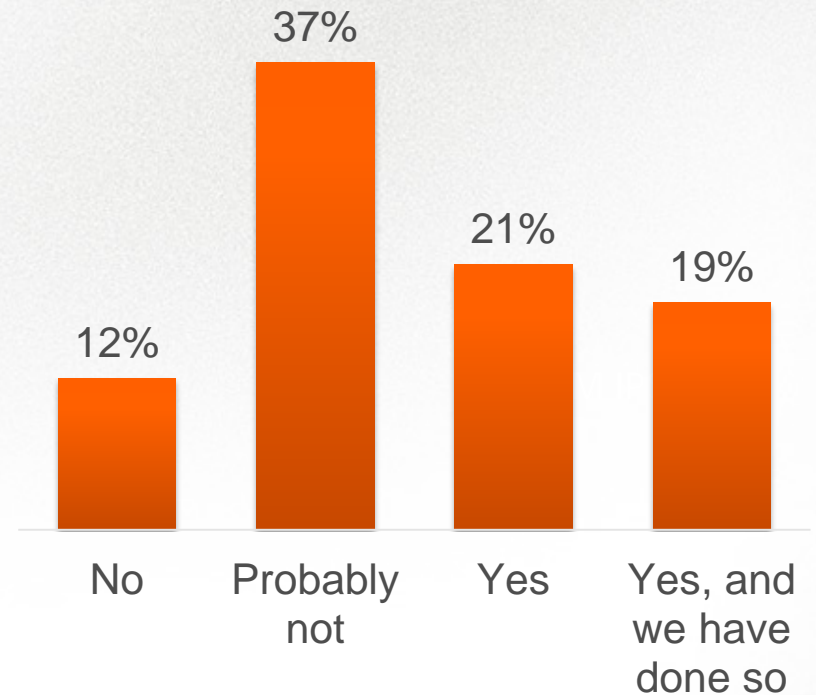
**# 5** Fear of mental illness

**# 6** Lack of interest

# Would you say that your church is equipped to welcome individuals with significant mental health issues into the daily life of the church?

N=903

**442 (49%) of members would say “no” or “probably not”**

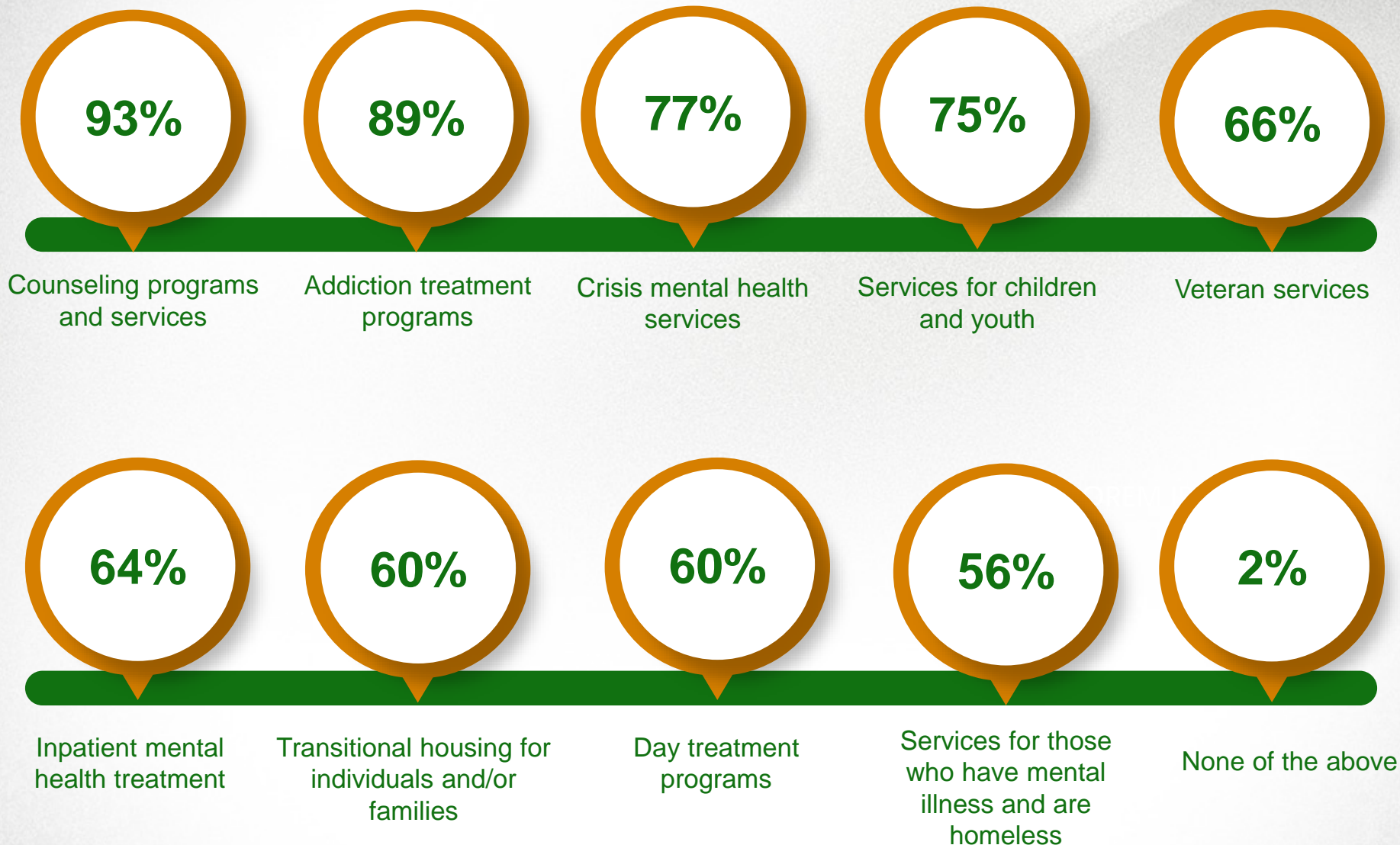


*\*Only two church leaders responded to this question on Church on the Corner survey, not giving enough information for comparison or reporting.*



# What services are available in the city or county where this church is located?

N=886



***Almost all members report having some type of mental health services in the town or county in which they live.***

Members ranked seven barriers to adequate community-based mental health treatment and services.

N=701

## # 1 Information about services is not widely shared

*followed by ...*

# 2 Individuals may not know that they are eligible for services

# 3 Limited access to resources

# 4 Inadequate transportation systems to get to a from services

# 5 Lack of mental health professionals

# 6 No free or low-cost treatment

# 7 Limited treatment options

Do members know the any indicators of mental health concerns or mental illness?

**Yes, they do.**

N=883

**89%**

**correctly  
identified all the  
listed indicators  
as forms of  
mental illness**

**99%**

Delusions, paranoia, hallucinations  
Excessive anger, hostility, violence  
Unrelenting sadness or low mood  
Inability to cope with daily problems

**98%**

Confused thinking  
Excessive fears or worries, extreme feelings of guilt  
Alcohol or drug abuse  
Suicidal thinking  
Feeling insignificant or worthless  
Trouble understanding and relating to situations or people

**96%**

Major changes in eating habits

**95%**

Withdrawal from friends and family  
Significant tiredness, low energy, problems sleeping

**93%**

Sex drive change

# Almost everyone knows someone with mental illness or mental health concerns.

N=882

**82%** Been depressed for an extended period of time

**81%** Been addicted to drugs or alcohol

**75%** Lived with chronic or ongoing mental health conditions that affects their daily life

**68%** Had a difficult time recovering from a loss

**64%** Contemplated suicide

**52%** Been diagnosed with PTSD

**48%** Died by suicide

**41%** Had a psychotic break



# Have you or your community experienced a large-scale violent act?

N=880

35%

A violent act occurred  
in this community

16%

I know people who  
were harmed

3%

Members of  
my family were harmed

1%

I was harmed

59%

None of the above

# What do members say about the stigmas surrounding mental health and mental illness concern?

N=876

*Agree  
or  
Disagree*

**99%**

Disagree that mental illness is a moral failing, a sign of weakness, or that it improves on its own.

**96%**

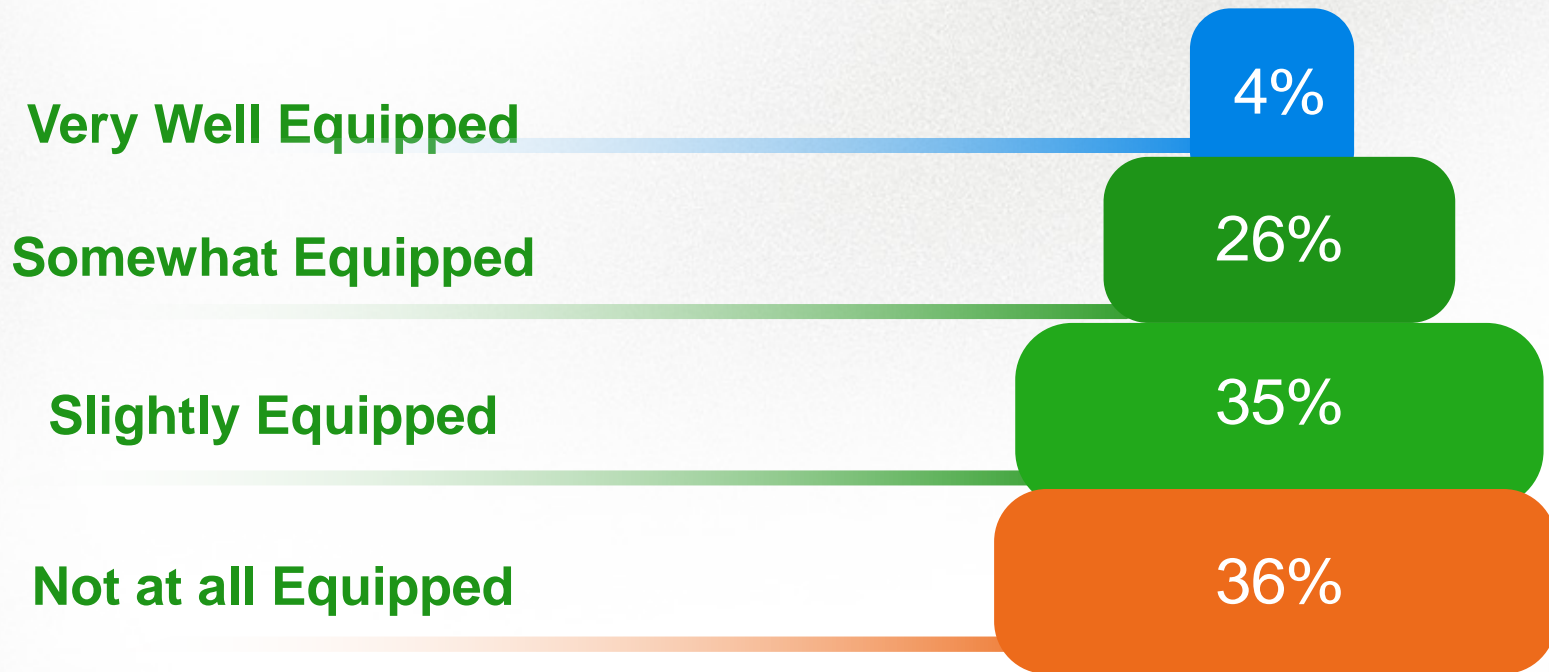
Agree that mental illness can happen to anyone.

**86%**

Disagree that mental illness can be cured through prayer.

How well equipped is your church...  
*to respond to its ministers who are facing mental health challenges?*

N=823



# How true each of the statements are for your church?

N=793

## *My church...*

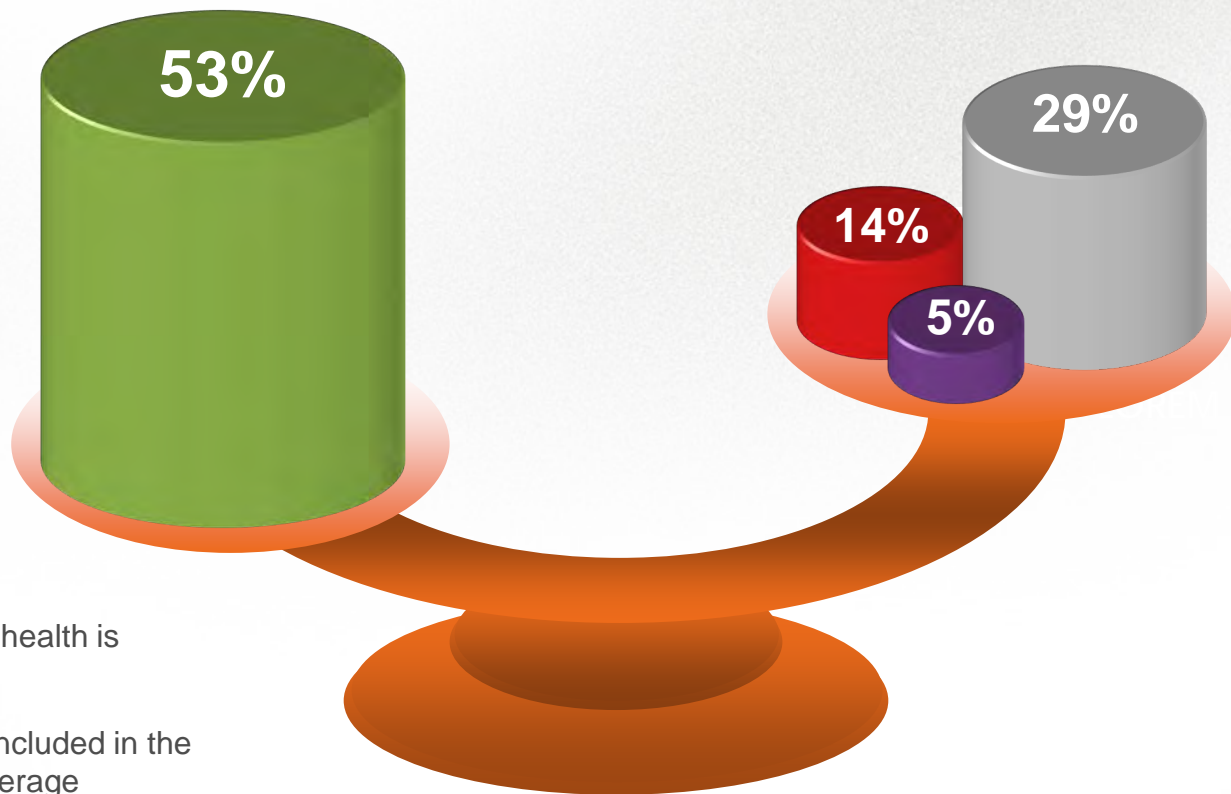
	Not at all True	Slightly True	Somewhat True	Very True
Is open to calling ministers who have a history of mental illness	36%	<b>39%</b>	19%	6%
Has a process in place to assist ministers who are facing mental health challenges	<b>60%</b>	25%	11%	4%
Provides access to confidential counseling for its ministers	<b>40%</b>	22%	20%	18%
Provides access to confidential counseling for its ministers' families	<b>45%</b>	22%	19%	14%
Takes preventive measures to help maintain the mental health of its ministers	31%	<b>35%</b>	24%	10%





# Does your church's medical insurance provide mental health and mental illness coverage for its staff?

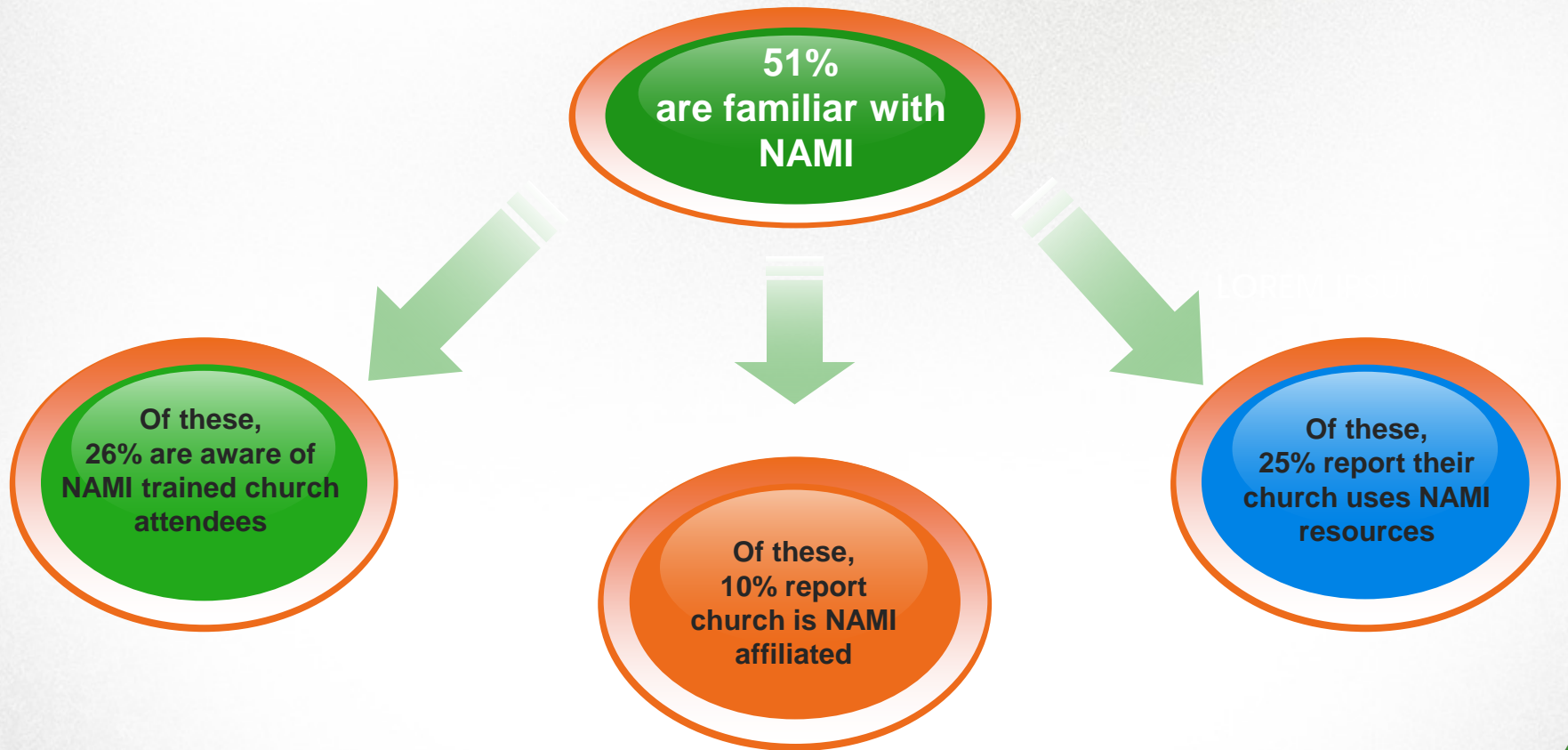
N=865

*A majority of members do not know if their church's medical insurance provides mental health and mental illness coverage for its staff. 19% of members say their church either does not provide medical insurance for staff or that mental health coverage is not included.*



-  Yes, mental health is covered
-  No, it is not included in the provided coverage
-  The church does not provide medical insurance for staff
-  Do not know about insurance coverage

51% (436) of members report being familiar with NAMI. Of those, 26% (113) are aware of individuals within their church who have been trained by NAMI. 10% (44) report that their church is affiliated with NAMI and 25% (109) report their church uses NAMI resources.



# Have ministers or other staff expressed the need for additional training so that they can ....

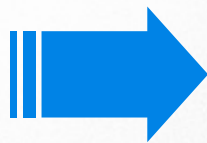
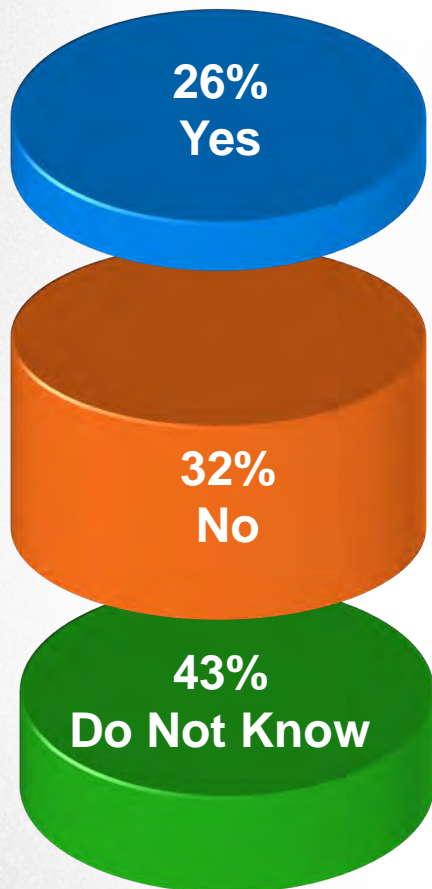
N=845

	No	Yes	Do Not Know
Better recognize signs and symptoms of mental illness	39%	15%	<b>46%</b>
Make better referrals to mental health professionals	37%	19%	<b>44%</b>
Know how to use mental health first aid when someone is expressing suicide feelings, showing signs of serious mental illness, or misusing substances	35%	19%	<b>46%</b>
Are better equipped to respond pastorally to traumatic events in the church or community	33%	23%	<b>44%</b>

# Does your church maintain a directory of mental health resources?

43% of members do not know if their church maintains a directory of local or regional mental health resources. Of the 26% that are aware of a directory, most do not know details about it.

N=857



*Of those who state that their church maintains a directory...*

	Yes	No	Do Not Know
Updated annually	30%	24%	<b>47%</b>
Not at the church, but there is one on the presbytery or synod website	13%	34%	<b>53%</b>
Available to all members of this congregation	<b>52%</b>	19%	29%

# Few respondents are aware of the mental health resources that are available to their church.

N=852

10%

The 223<sup>rd</sup> General Assembly has set aside \$250,000 for the purpose of funding grants that empower congregations, mid councils, and seminaries to expand or initiate mental health ministries

11%

PC(USA) resource, *Comfort My People Policy Paper on Serious Mental Illness and Study Guide*

10%

PC(USA) resource, Mental Health Ministry website: [www.pcusa.org/mental health](http://www.pcusa.org/mental%20health)



The average respondent is white, 56 - 75 years old, and is politically, socially, and theologically moderate.

